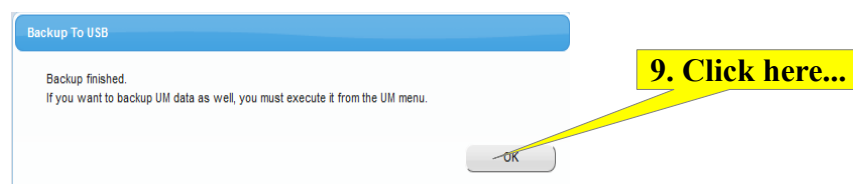
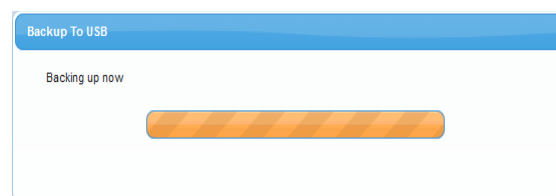
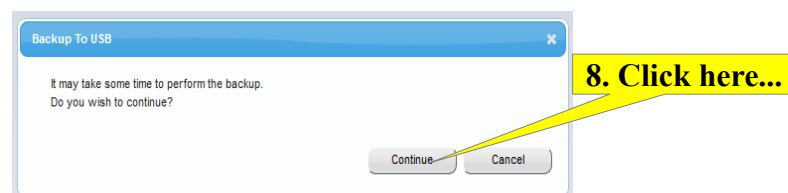
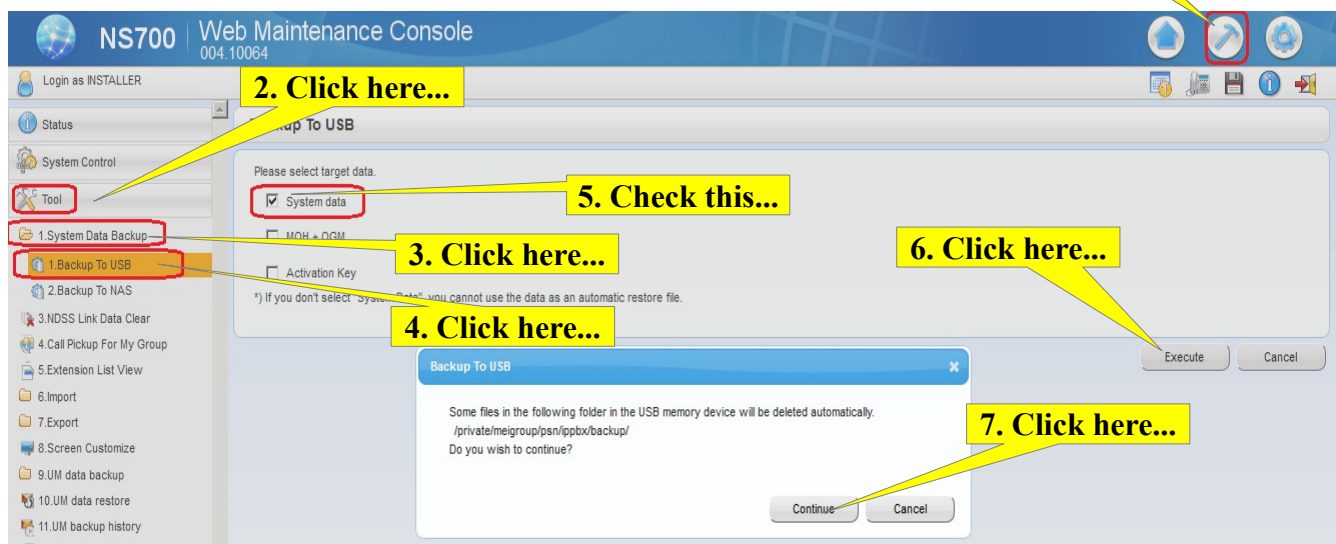


Panasonic KX-NS700 **Backup System Data to USB Drive** **Telquest Tech Support**

You can Backup/Save all of the System Data to a USB Drive.
The USB Drive plugs into the front of the KSU.



The name of the back up folder on the USB Drive will be the word *private*

When you restore the configuration from the USB Drive, the KSU looks for the *private* folder

If you change it, then the KSU will not find it.

It seems to me that the idea is that the USB Drive will remain in the KSU and not be removed.

To Restore the saved configuration to the KSU:

Make sure the USB Drive is plugged into the KSU.

Power down the KSU.

Place the System Initialize switch to the LEFT.

Power on the KSU.

Wait for the STATUS LED to start flashing.

Then, place the System Initialize switch to the RIGHT.

It will take several minutes for the system to load the saved configuration from the USB Drive.

When it is done, the phones will come back on.

If you use Analog CO Lines, they take a minute to come on.

While they are being tested by the KSU they will light RED.